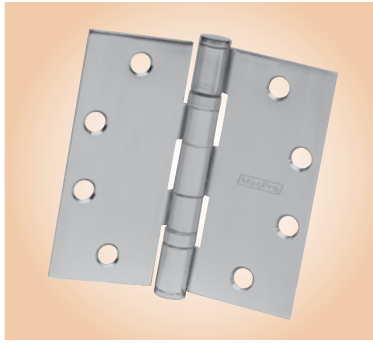


# MACPRO<sup>®</sup> by McKinney



### Applications:

- Apartments
- Hotels / Motels
- Dormitories
- Office Buildings

## McKinney Gets The Job Done Right

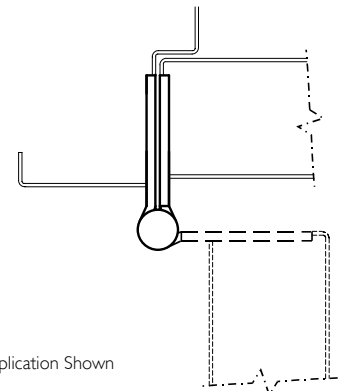
MacPro by McKinney offers contractor grade hinges to get the job done right. High quality and competitive prices equal an extraordinary value, ideal when large quantities of standard hinges are needed.

MacPro hinges include non-bearing and bearing hinges. For doors with a closing device, a bearing hinge must be used. For heavier doors with closing devices, select a heavy weight bearing hinge. Choose Stainless Steel for situations where hinges are exposed to the elements. Choose the NRP (Non-Removable Pin) option in situations where tampering may be an issue.

MacPro by McKinney templated hinges are made to conform to ANSI/BHMA 156.1, 156.7.

## Features & Benefits

Quality materials and craftsmanship	Product is reliable and easy to install
Durable construction	Low frequency of breakage and repairs
Competitive price	Complete the job within budget
Choice of finishes	Match existing hardware
Standard and heavy weight hinges	Match the right hinge to the application
Installation screws included	Quick installation with proper hardware
3-Day QuickShip Program	Complete the job on time



Application Shown

## Specifications

Catalog Number	Size	Hinge Type	Base Material	Gauge	Weight	Finish	Options
MP79	4-1/2 x 4	Non-Bearing Hinge	Steel	.134	STD	P, 4, 26D	NRP
MP79	4-1/2 x 4-1/2	Non-Bearing Hinge	Steel	.134	STD	P, 3, 4, 26, 26D	NRP
MPB79	4-1/2 x 4	Bearing Hinge	Steel	.134	STD	P, 4, 26D	NRP
MPB79	4-1/2 x 4-1/2	Bearing Hinge	Steel	.134	STD	P, 3, 4, 10B, 26, 26D	NRP
MPS60	4-1/2 x 4-1/2	Spring Hinge	Steel	.134	STD	P, 26D	
MP679	4-1/2 x 4-1/2	2 Spring Hinges and 1 Bearing Hinge	Steel	.134	STD	26D	
MPB68	4-1/2 x 4-1/2	Bearing	Steel	.180	HVY	26D	NRP
MPB91	4-1/2 x 4-1/2	Bearing	Stainless	.134	STD	32D	NRP
MPB99	4-1/2 x 4-1/2	Bearing	Stainless	.180	HVY	32D	NRP