

Fact

- Tornadoes are one of the powerful forces of nature
- Wind speeds of up to 250 mph or more cause tremendous destruction
- The path can easily be a mile wide
- In an average year, over 800 tornadoes are reported in the U. S.
- Annually 80 deaths and thousands of injuries can be attributed to tornadoes
- Doppler radar has greatly enhanced the ability to predict, spot and warn the National Weather Service of impending storms
- New FEMA 361 and 320 Standards clarifies the term "safe room" as applying to all shelters, buildings, or spaces designed to the FEMA criteria (whether for individuals, residences, small businesses, schools, or communities)

McKinney®

ASSA ABLOY

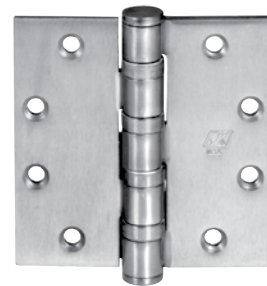
StormPro® Tornado Resistant Hinges

Built to withstand the extreme wind speeds and flying debris, associated with severe weather conditions, StormPro® hinges are part of a complete UL approved ASSA ABLOY Tornado Resistant solution utilizing Ceco StormPro®361, Curries StormPro®361 and Baron F-5 doors and frames. McKinney is pleased to announce that unique part numbers are now in place to support the ordering of StormPro® hinges.

Certifications: As part of the integrated system, meets Federal Emergency Management Agency (FEMA) 320 and 361 Standards, as certified by Underwriters Laboratory.

| Specify: | Product Description | Part # |
|----------|---------------------|--------|
| | 4½ x 4½ SP3386 32D | 73972 |
| | 4½ x 4½ SP3786 26D | 73971 |
| | 4½ x 4½ SP3786 P | 73970 |
| | 5 x 4½ SP3386 32D | 73982 |
| | 5 x 4½ SP3786 26D | 73981 |
| | 5 x 4½ SP3786 P | 73980 |

| | |
|-----------|-------------------------|
| Features: | Fire rated thru 3 hours |
| | 4 bearing |
| | Stainless Steel Screws |
| | 180 gauge |



Tornado

All StormPro® products should be ordered as a complete integrated unit including the frame and door along with other StormPro® hardware. The StormPro® Hinges are a required component of the certified StormPro® system.

ASSA ABLOY, the global leader
in door opening solutions

McKINNEY Hinge Catalog

Full Mortise Bearing Hinges

Five Knuckle Heavy Weight StormPro® Series

McKinney®
ASSA ABLOY

SP3386

Stainless steel base material polished.

SP3786

Steel material polished and plated or furnished in powder coat.



StormPro®

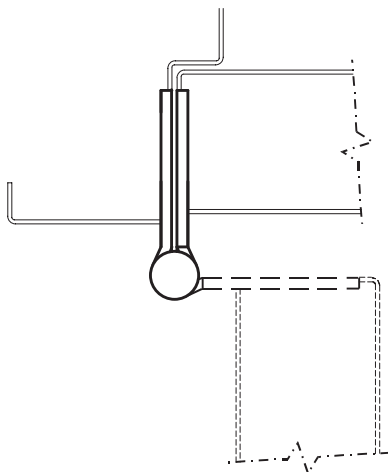
Available Options:

- NRP (non-removable pin)

Features:

- Built to withstand extreme wind speeds and flying debris associated with severe weather conditions
- Packed with stainless machine screws
- Fire rated thru 3 hours
- Part of the integrated unit when used with CECO StormPro® 361, CURRIES StormPro® 331 and BARON F-5 doors and frames, along with other StormPro® hardware by ASSA ABLOY Companies

APPLICATION



Available Sizes

| Inches | MM | Gauge |
|---------|---------------|-------|
| 4½ x 4½ | 114.3 x 114.3 | .180 |
| 5 x 4½ | 127 x 114.3 | .180 |

Full Mortise Hinge Fasteners

| Hinge Size | Machine |
|------------|-----------|
| 4½ x 4½ | ½ x 12-24 |
| 5 x 4½ | ½ x 12-24 |

Packing:

StormPro® 5K heavy weight full mortise hinges are packed with stainless screws, all machine screws.

ANSI Cross Reference:

A5111 Stainless
A8111 Steel

Required component of the integrated StormPro unit, including the frame and door, along with other StormPro hardware.