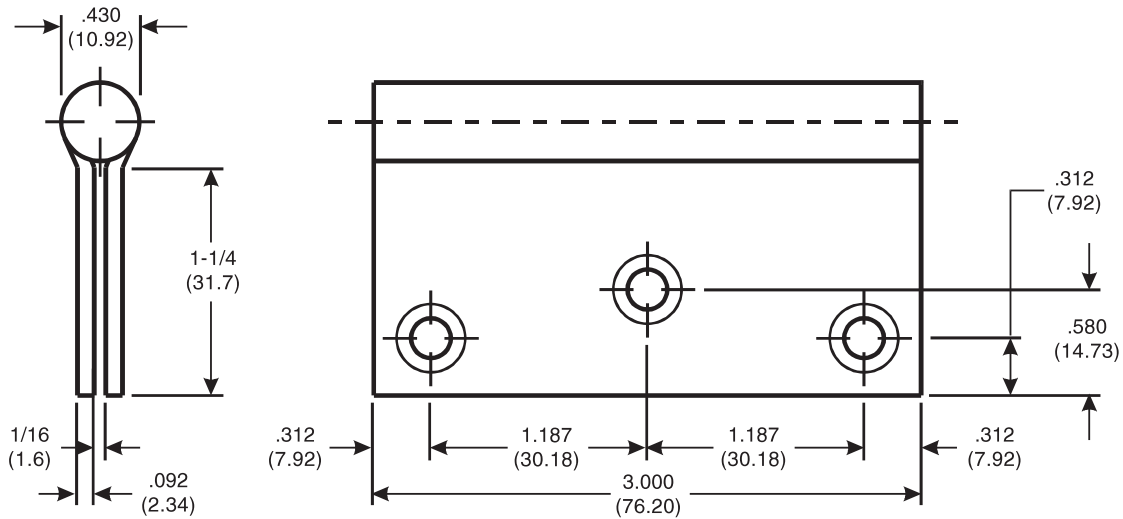


### 3 x 3 FULL MORTISE TEMPLATE HINGES

DO NOT SCALE



CATALOG NUMBER	
STEEL HINGES	*NON-FERROUS HINGES
T 2714	T 2314

McKINNEY Template Hinges of the above Catalog Numbers are made to conform to ANSI/BHMA 156.7.  
 Institutional Type Hinges conform to above screw hole locations.  
 Machine Screw Size - 1/2 x 10-24 F.H.  
 Wood Screw Size - 1 x 10 F. H.  
 \*Check Catalog for Metals.

McKINNEY Products Company • 225 Episcopal Road • Berlin, CT 06037 • PHONE: 800-346-7707 • FAX: 800-541-1073

ASSA ABLOY, the global leader in door opening solutions

TEMPLATE 015-98

Copyright © 1998, 2008, McKinney Products Company, an ASSA ABLOY Group company. All rights reserved. Reproduction in whole or in part without the express written permission of McKinney Products Company is prohibited. 9/15/08