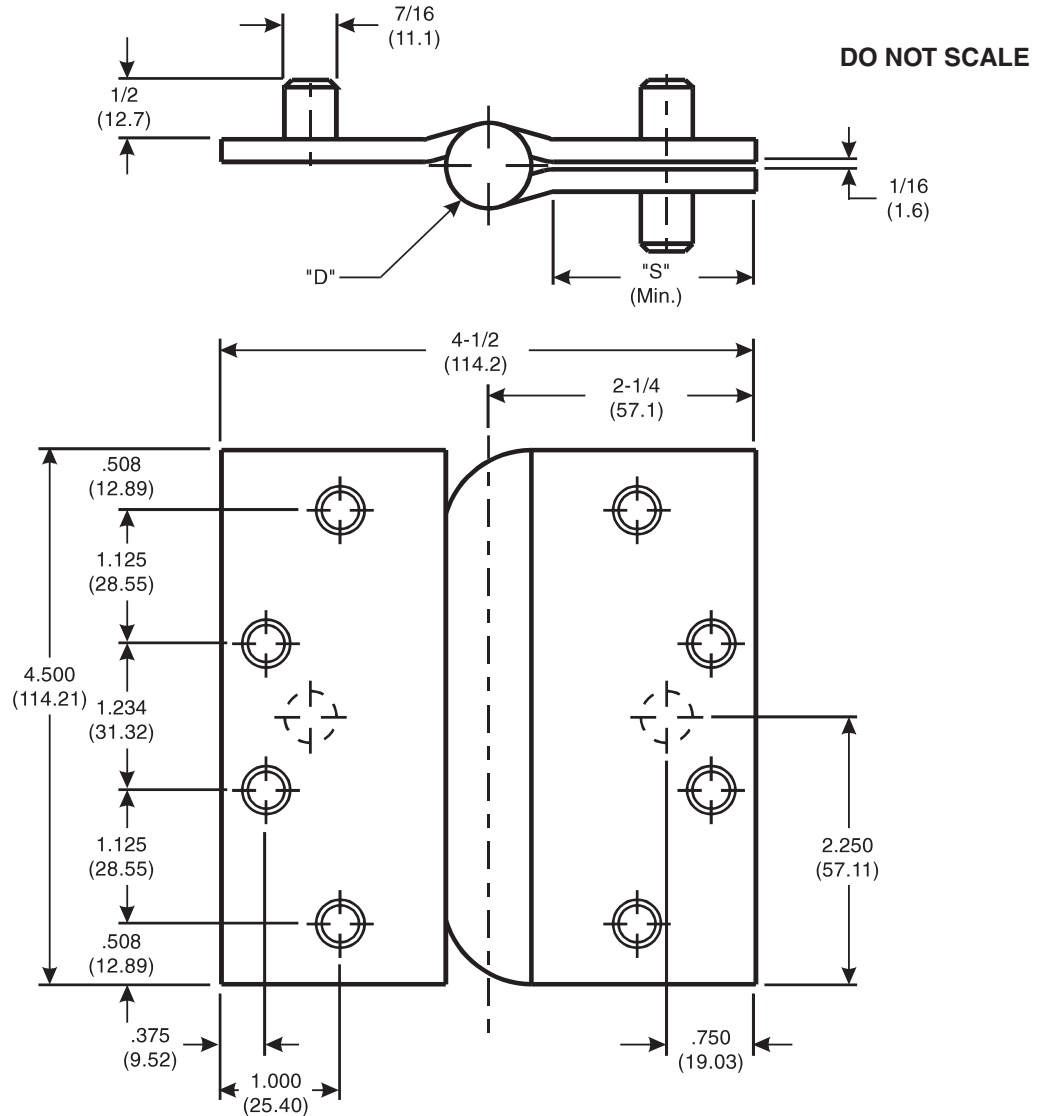


4 1/2 x 4 1/2 FULL MORTISE TEMPLATE INSTITUTIONAL HINGE



CATALOG NUMBER		GAUGE OF METAL	"D" OUTSIDE DIAMETER	"S" DISTANCE (SWAGE LINE)
STEEL HINGES	STAINLESS STEEL HINGES			
*HTB 786	*HTB 386	.180 (4.57)	.720 (18.29)	1-13/16 (46.0)
-	**ICHTB 386	.188 (4.77)	.830 (21.08)	1-3/4 (44.4)

McKINNEY Template Institutional Hinges of the above Catalog Numbers are made to conform to ANSI/BHMA 156.7 for Screw hole Location and Gauge of Metal. Prison Safety Feature (PSF) size and location conforms to this drawing.

*Machine Screw Size - 1/2 x 12-24 F.H.

*Wood Screw Size - 1-1/4 x 12 F.H.

**Machine Screw Size - 5/8 x 1/4-20 F.H.

McKINNEY Products Company • 225 Episcopal Road • Berlin, CT 06037 • PHONE: 800-346-7707 • FAX: 800-541-1073

ASSA ABLOY, the global leader in door opening solutions