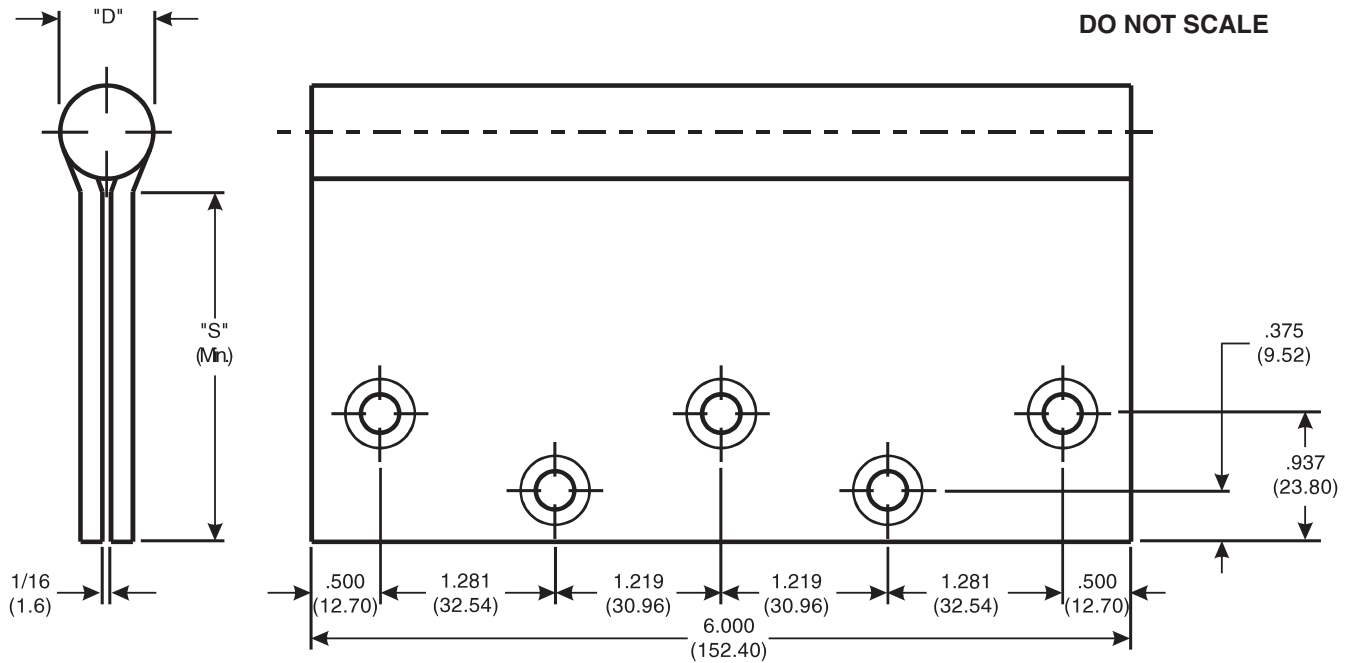


### 6 x 5 -6 x 6 FULL MORTISE TEMPLATE HINGES

DO NOT SCALE



CATALOG NUMBER		GAUGE OF METAL	"D" OUTSIDE DIAMETER	"S" DISTANCE (SWAGE LINE)	
STEEL HINGES	*NON-FERROUS OR STAINLESS STEEL HINGES			HINGE WIDTH	
				5 (127.0)	6 (152.4)
TA 786	TA 386	.203 (5.16)	.818 (20.78)	-	2-3/8 (60.3)
T 2714	-	.160 (4.06)	.681 (17.30)	-	2-9/16 (65.1)
TA/TB 2714	TA/TB 2314	.160 (4.06)	.681 (17.30)	-	2-9/16 (65.1)
-	TA/TB 3313	.160 (4.06)	.681 (17.30)	-	2-9/16 (65.1)
T4A/T4B 3786	T4A/T4B 3386	.203 (5.16)	.818 (20.78)	1-7/8 (47.6)	2-3/8 (60.3)

McKINNEY Template Hinges of the above Catalog Numbers are made to conform to ANSI/BHMA 156.7.

Institutional Type Hinges conform to above screw hole locations.

Machine Screw Size - 1/2 x 1/4-20 F.H.

Wood Screw Size - 1-1/2 x 14 F. H.

\*Check Catalog for Metals.

These templates can be found on our website at [www.mckinneyhinge.com](http://www.mckinneyhinge.com)

McKINNEY Products Company • 225 Episcopal Road • Berlin, CT 06037 • PHONE: 800-346-7707 • FAX: 800-541-1073

ASSA ABLOY, the global leader in door opening solutions