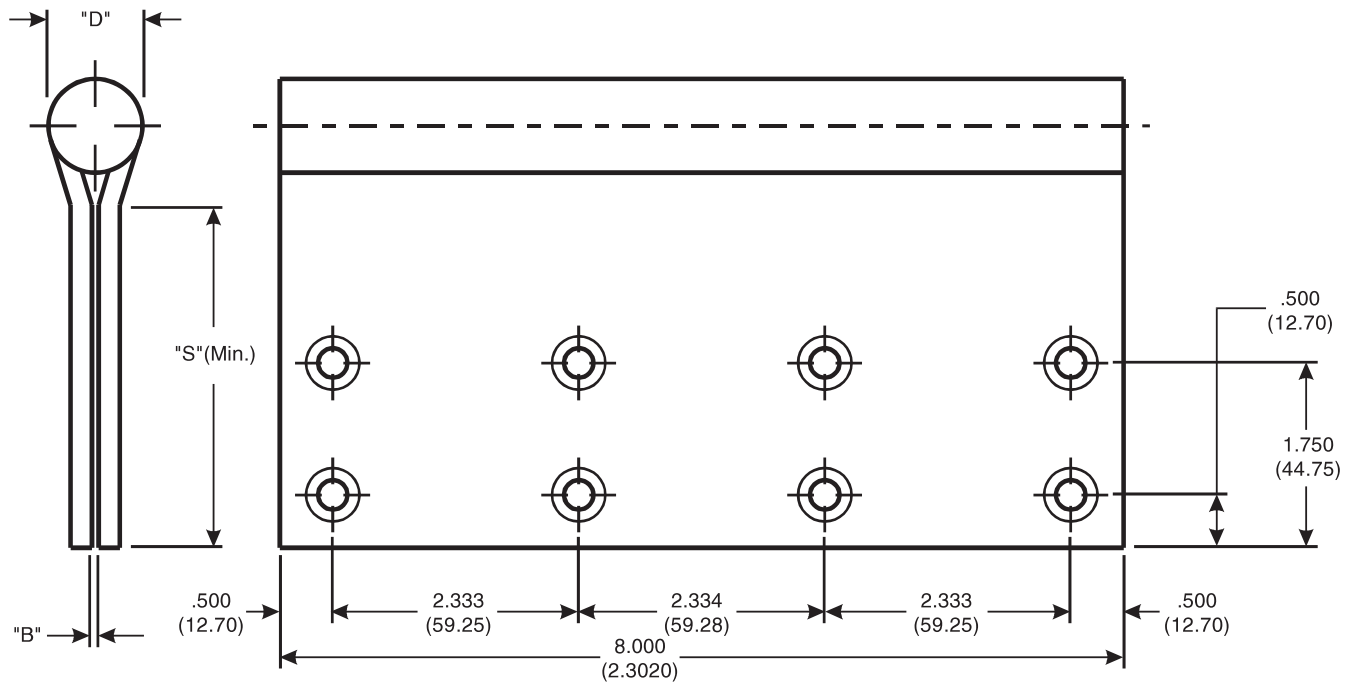


### 8 x 8 FULL MORTISE TEMPLATE HINGES

DO NOT SCALE



The above pattern is for 2-1/4" or more thick doors;  
 For doors less than 2-1/4" thick see template 046A

CATALOG NUMBER		GAUGE OF METAL	"B" SWAGE	"D" OUTSIDE DIAMETER	"S" DISTANCE (SWAGE LINE)
STEEL HINGES	*NON-FERROUS OR STAINLESS STEEL HINGES				HINGE WIDTH
					8 (202.2)
T6B 3786	T6B 3386	.203 (5.16)	1/16 (1.6)	.991 (25.17)	3-1/4 (82.5)
TB 786	-	.225 (5.71)	3/32 (2.4)	1.070 (27.18)	3-5/16 (84.1)

McKINNEY Template Hinges of the above Catalog Numbers are made to conform to ANSI/BHMA 156.7.

Machine Screw Size - 1/2 x 1/4-20 F.H.

Wood Screw Size - 1-1/2 x 14 F.H.

\*Check Catalog for Metals.

These templates can be found on our website at [www.mckinneyhinge.com](http://www.mckinneyhinge.com)

McKINNEY Products Company • 225 Episcopal Road • Berlin, CT 06037 • PHONE: 800-346-7707 • FAX: 800-541-1073

ASSA ABLOY, the global leader in door opening solutions

TEMPLATE 046B-10

Copyright © 1998, 2008, 2010, McKinney Products Company, an ASSA ABLOY Group company. All rights reserved. Reproduction in whole or in part without the express written permission of McKinney Products Company is prohibited.

8/23/10