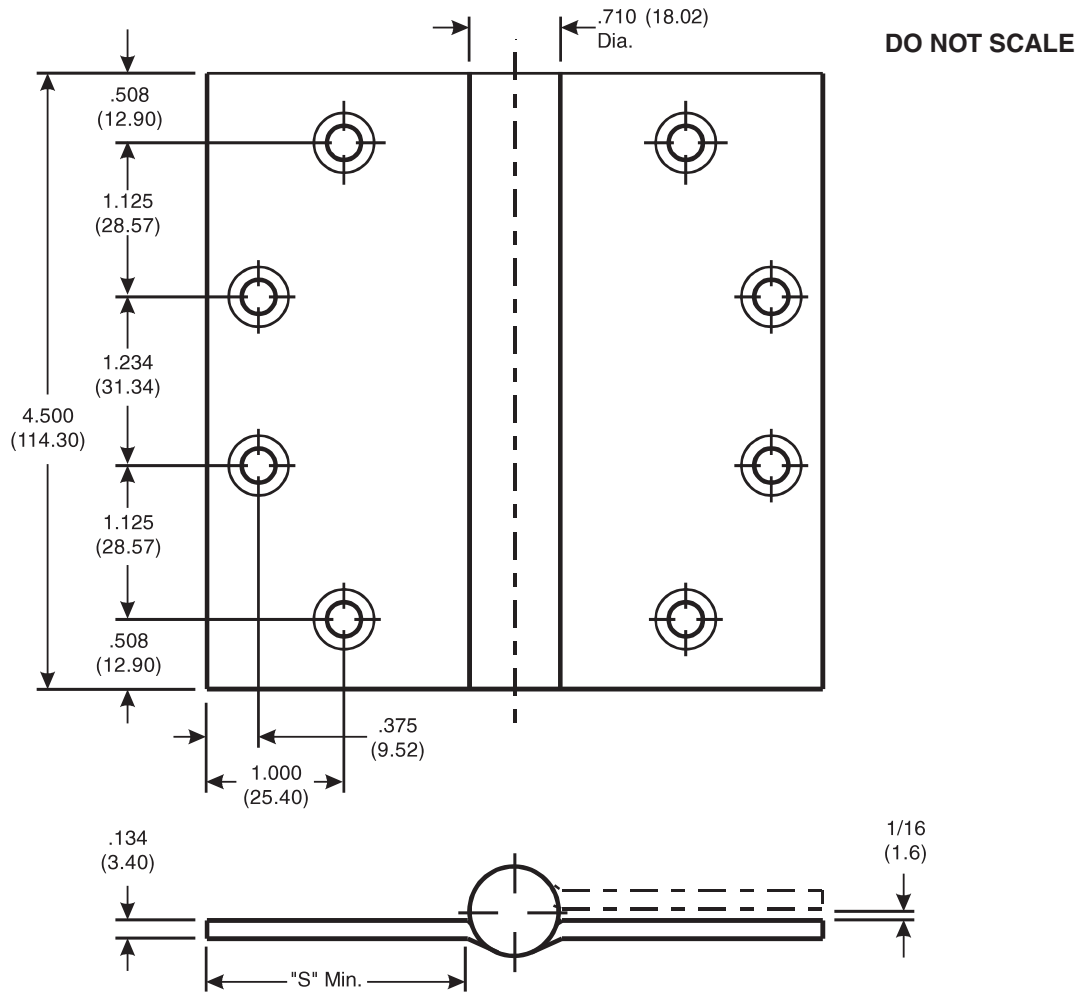


**4½ x 4½ - MPS60  
 TEMPLATE FULL MORTISE CONCEALED BEARING  
 ADJUSTABLE SPRING HINGE**



DO NOT SCALE

CATALOG NUMBER	"S" DISTANCE (SWAGE LINE)
STEEL HINGES	HINGE WIDTH
	4½ (114.3)
MPS60	1-27/32 (46.8)

McKINNEY Template Full Mortise Concealed Bearing Adjustable Spring Hinges are made to conform to ANSI/BHMA 156.7.  
 Machine Screw Size - 1/2 x 12-24 F.H.  
 Wood Screw Size - 1-1/4 x 12 F. H.